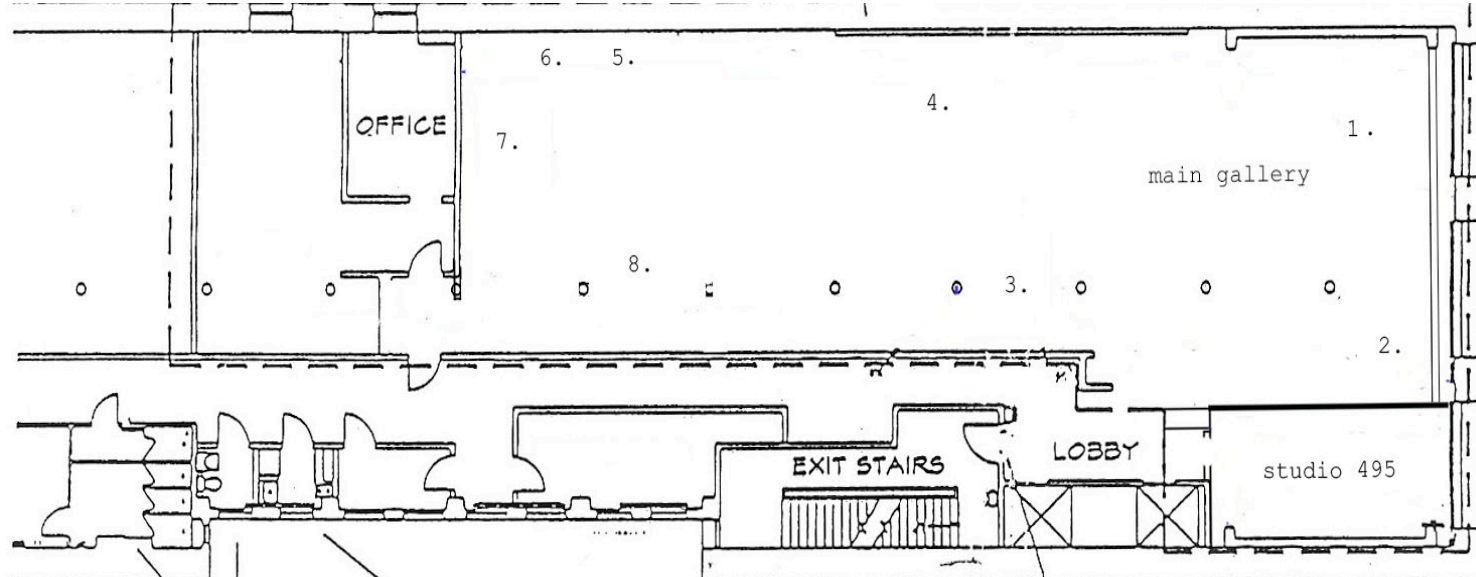


SWISS INSTITUTE / CONTEMPORARY ART  
495 BROADWAY / 3RD FLOOR  
NEW YORK / NY 10012  
TEL 212.925.2035  
WWW.SWISSINSTITUTE.NET

# SI

## ART WORK FLOOR PLAN



SWISS INSTITUTE / CONTEMPORARY ART  
495 BROADWAY / 3RD FLOOR  
NEW YORK / NY 10012  
TEL 212.925.2035  
WWW.SWISSINSTITUTE.NET



## THE WHY OF LIFE

APR 9 - MAY 17

Gregory and Cyril Chapuisat, Carsten Höller, Sean Landers, Kelly Nipper, Lisa Oppenheim, Roman Signer

### WORKLIST

**1. Kelly Nipper**

*Circle Circle*, 2007

62 x 62 x 62 inches

Translation booth, stage, mobile, microphone, amp, speakers

Courtesy Anna Helwing Gallery, Los Angeles

**2. Lisa Oppenheim**

*100 Photographs That Changed The World*, 2007

Installation

Dimensions variable

Courtesy Juliette Jongma Gallery, Amsterdam

and Harris Lieberman, New York

**3. Gregory and Cyril Chapuisat**

*Untitled*, 2008

Installation

**4. Carsten Höller**

*Suicide Gerbera Daisy Plant*, 2008

Potted plant (Gerbera daisy), cable connected to socket, band-aid, thread, lead weight

Dimensions variable

Courtesy Casey Kaplan, New York

Courtesy Galerie Esther Schipper, Berlin

**5. Sean Landers**

*Huffer Gold Metallic*, 2007

Oil on Linen

54 x 45 inches

Courtesy Andrea Rosen Gallery, New York

**6. Sean Landers**

*Huffer Blue Metallic*, 2007

Oil on Linen

54 x 45 inches

Courtesy Andrea Rosen Gallery, New York

**7. Sean Landers**

*Fiat Lux*, 2008

Oil on Linen

108 x 204 inches

Courtesy Andrea Rosen Gallery, New York

**8. Roman Signer**

*Candle*, 1985

Candle on board with air pump

24 x 72,2 x 25,7 cm

Courtesy Friedrich Christian Flick Collection, Berlin