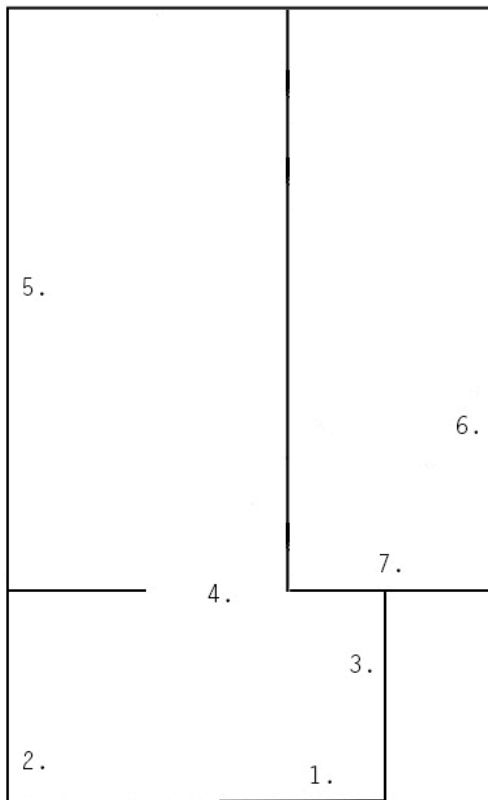


SI

Niele Toroni

June 3 – September 6, 2015

Imprints of a no. 50 brush repeated at regular intervals of 30 cm



Lobby:

1. Intervention, 2015
White acrylic on window
2. Intervention, 2015
Blue acrylic on electrical panel
3. Chutes, 2000
Orange acrylic on colored paper
98 ½ x 28 ¼ in (250 x 72 cm)
4. Intervention, 2015
Black acrylic on wall

Main gallery:

5. 25 paintings, 1987
Orange acrylic on canvas
25 canvases, each 39 ¼ x 39 ¼ in (100 x 100 cm)
6. Roll of waxed canvas, 1968
Synthetic polymer paint on coated fabric
398 x 55 in (1011 x 140 cm)
Courtesy The Museum of Modern Art, New York. Partial gift of the Daled Collection and partial purchase through the generosity of Maja Oeri and Hans Bodenmann, Sue and Edgar Wachenheim III, Marlene Hess and James D. Zirin, Agnes Gund, Marie-Josée and Henry R. Kravis, and Jerry I. Speyer and Katherine G. Farley.
7. 7 imprints at regular intervals of 30 cm, 2014
Orange acrylic on letter paper